

Solutions and Engagement

Paul Caskey
Jessica Fink
Erin Murtha

November 9, 2020

InCommon®

INTERNET®
2



About Us

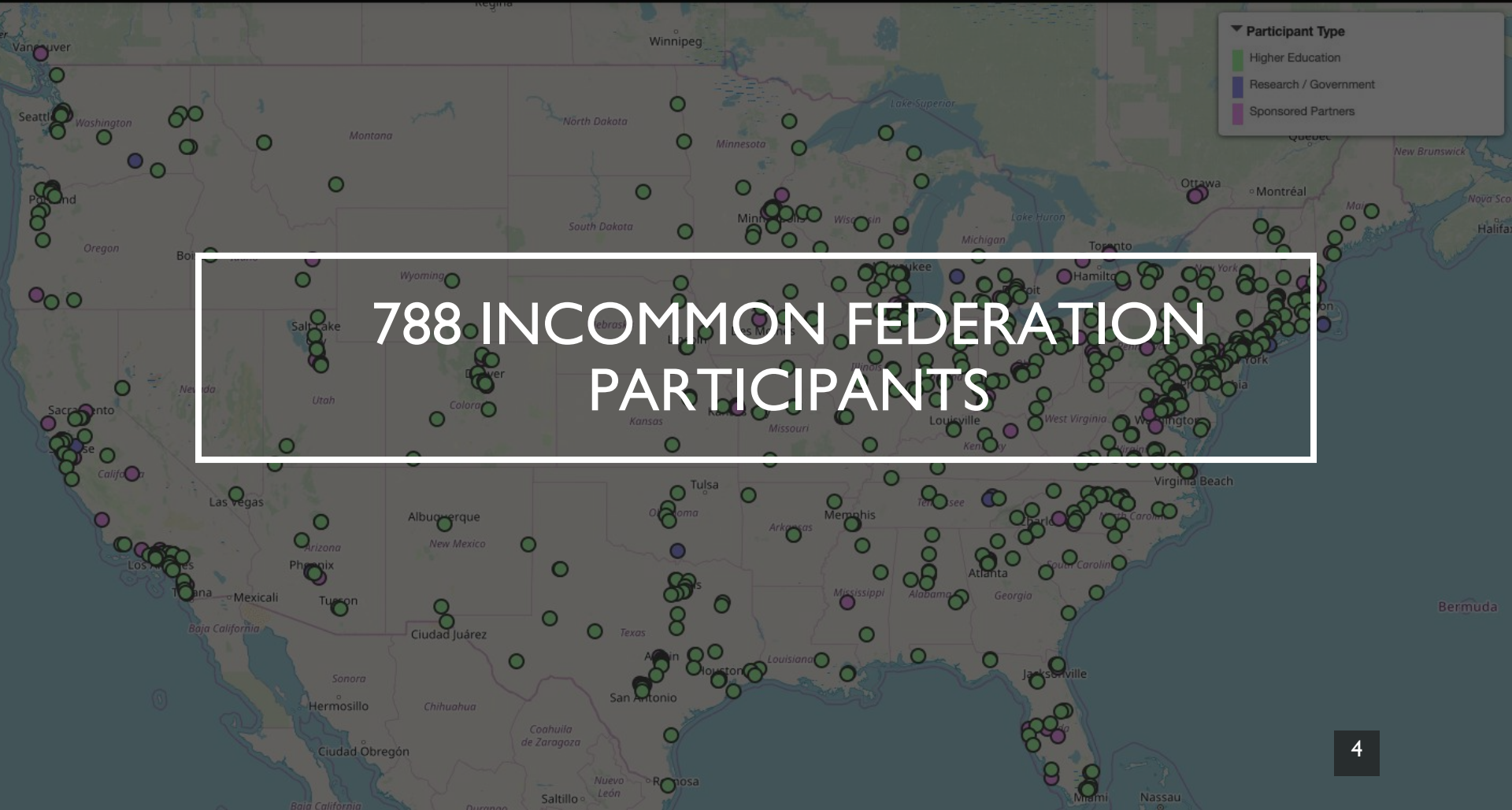
What is InCommon?

- Community dedicated to making access to services to support collaboration easier on a global scale
- Supports the entire range of activities
 - Legal framework to root trust and requirements
 - Community Source Software for managing identity for IT and Research
 - Service (Federation) to provide trusted information that organizations use to connect with each other.
 - Standards for how it all works together
 - Training to speed adoption and protect investment over time
 - Corporate and non-profit options for support, hosting and integration help
 - Community Engagement and Global Coordination to evolve the ecosystem over time
- Operated by Internet2

▼ Participant Type

- Higher Education
- Research / Government
- Sponsored Partners

788 INCOMMON FEDERATION PARTICIPANTS



INCOMMON AND EDUGAIN: GLOBAL INTER-FEDERATION FOR THE US

InCommon: US Federation

- 6000+ Registered Systems
- 578 Authentication Systems (Identity Providers)
- 5435 Services (Service Providers)

eduGAIN: International Inter-federation

- 70 Countries
- 7100+ Registered Systems
- 4046 Authentication Systems (Identity Providers)
- 3119 Services (Service Providers)

InCommon[®]

Open Source
Software Solutions

TRUSTED ACCESS

PLATFORM

InCommon Academy Training Portfolio

InCommon[®]

**TRUSTED ACCESS
PLATFORM**



Shibboleth

Get single sign-on (SSO) to services hosted locally or globally using the InCommon Federation. Looking to offer services to organizations in the US or around the world? Shibboleth supports that too.



Grouper

Make collaboration and controlled-access happen fast by managing information about roles, groups and permissions and pushing that out to your services.

midPoint

midPoint

Create and manage user information, add your business rules and then seamlessly synchronize it to services and other repositories to make sure identity data are always up to date.



COmanage

Looking to provide access for parents, collaborating scholars, and others? Manage the identity lifecycle, invite collaborators, enable account linking, and get services in the know by using your organization's provisioning tools.

Common Use Cases

- Federated Single Signon: Access research partners and cloud providers with local credentials!
 - Shibboleth IdP/SP
- Access Management: Manage and dynamically determine access rights based on source data
 - Grouper
- Identity Provisioning: Create/Manage identity data in downstream apps/systems
 - midPoint
 - COmanage
- Guest Management/Registry: Identity lifecycle management for a diverse group of people
 - COmanage



CASE STUDY:
NIH

Need to know about researchers...	Global Federation (REFEDS Standards) supports...
Name, email and identifier attributes	Research and Scholarship Entity Category
Multifactor authentication	MFA Profile for signaling request/response
Moderate assurance so NIH knows who users really are	Assurance Framework (ID proofing attributes)

InCommon[®]

Learning and
Engagement

ACADEMY

Designing the InCommon Academy

- Established in 2019
- Reaction to community need
- Recognition that folks were fighting individual battles at their institutions and craved something more systematic
- Desire to serve *all* of the community
 - Regardless of IAM maturity level
 - Support to meet institutional goals
- Offer a variety of collaboration and learning opportunities



Community-designed identity and access management services and software connecting you to the world.

By the Community.
For the Community.



One-stop shop: learn IAM basics from design to implementation.



Choose the learning and collaboration opportunities where it makes sense for you.



Learn from on-the-ground community implementers.



Compare notes with your peers at similar organizations.



Know you are implementing community practices.



A Place for Everyone

1. We created BaseCAMP to welcome, inform, and connect those new to IAM
2. We expanded our training portfolio to cover all of the InCommon Trusted Access Platform
3. We launched a virtual training platform
4. We created the Collaboration Support Program so that organizations don't have to tackle their IAM projects alone

InCommon Learning and Collaboration

What's this all about?
Will it work for me?

How can I
learn the
details?

How can I get
started?

How can I
get support?

What are
others doing?

How can I
influence the
work?

Learn the basics
of Federation and
related software.

Get one-on-one
expert answers to
your questions.

Learn about each
of the InCommon
Trusted Access
Platform
components
(Shibboleth,
Grouper,
COmanage,
midPoint).

Refine your plan
with help from
experts and peers.

Get help to get it
done.

Finish with
education credit.

Ask community
experts questions
through traditional
methods.

Join a working group.

Meet the Catalysts.

Find out how you
can build on your
work by sharing and
comparing notes
with others.

Work with your
peers to guide
direction of the
services and
software.

BaseCAMP

**Software
Training**

**Collaboration
Success Program**

**Open Multi-Channel
Support Model**

CAMP

Advance CAMP



*The power behind InCommon Software,
Services, and Communities*

InCommon Learning and Collaboration

What's this all about?
Will it work for me?

How can I
learn the
details?

How can I get
started?

How can I
get support?

What are
others doing?

How can I
influence the
work?

Learn the basics
of Federation and
related software.

Get one-on-one
expert answers to
your questions.

Learn about each
of the InCommon
Trusted Access
Platform
components
(Shibboleth,
Grouper,
COmanage,
midPoint).

Refine your plan
with help from
experts and peers.

Get help to get it
done.

Finish with
education credit.

Ask community
experts questions
through traditional
methods.

Join a working group.

Meet the Catalysts.

Find out how you
can build on your
work by sharing and
comparing notes
with others.

Work with your
peers to guide
direction of the
services and
software.

BaseCAMP

**Software
Training**

**Collaboration
Success Program**

**Open Multi-Channel
Support Model**

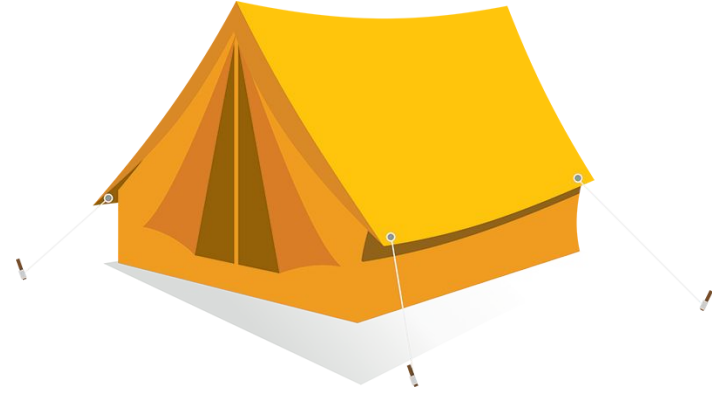
CAMP

Advance CAMP



*The power behind InCommon Software,
Services, and Communities*

Scope out the campground.



InCommon BaseCAMP is an introductory workshop providing:

- ✓ An introduction to the **basics of identity and access management** — whether you manage identities, resources, or both
- ✓ An introduction to the **InCommon Federation**, the U.S. identity federation serving education and research
- ✓ An overview and demonstrations of the **InCommon Trusted Access Platform** and the role it can play in your IAM system

InCommon Learning and Collaboration

What's this all about?
Will it work for me?

How can I
learn the
details?

How can I get
started?

How can I
get support?

What are
others doing?

How can I
influence the
work?

Learn the basics
of Federation and
related software.

Get one-on-one
expert answers to
your questions.

Learn about each
of the InCommon
Trusted Access
Platform
components
(Shibboleth,
Grouper,
COmanage,
midPoint).

Refine your plan
with help from
experts and peers.

Get help to get it
done.

Finish with
education credit.

Ask community
experts questions
through traditional
methods.

Join a working group.

Meet the Catalysts.

Find out how you
can build on your
work by sharing and
comparing notes
with others.

Work with your
peers to guide
direction of the
services and
software.

BaseCAMP

Software
Training

Collaboration
Success Program

Open Multi-Channel
Support Model

CAMP

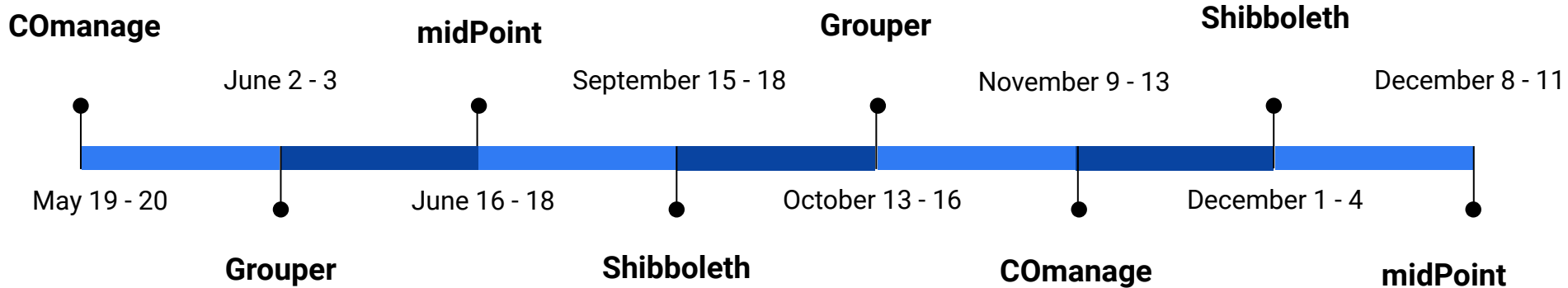
Advance CAMP



*The power behind InCommon Software,
Services, and Communities*



2020 **Virtual** Trusted Access Platform Training Schedule



For details, see incommon.org/academy or email training@incommon.org

Course Previews: Grouper School & Shibboleth Workshop



InCommon Learning and Collaboration

What's this all about?
Will it work for me?

How can I
learn the
details?

How can I get
started?

How can I
get support?

What are
others doing?

How can I
influence the
work?

Learn the basics
of Federation and
related software.

Get one-on-one
expert answers to
your questions.

Learn about each
of the InCommon
Trusted Access
Platform
components
(Shibboleth,
Grouper,
COmanage,
midPoint).

Refine your plan
with help from
experts and peers.

Get help to get it
done.

Finish with
education credit.

Ask community
experts questions
through traditional
methods.

Join a working group.

Meet the Catalysts.

Find out how you
can build on your
work by sharing and
comparing notes
with others.

Work with your
peers to guide
direction of the
services and
software.

BaseCAMP

Software
Training

**Collaboration
Success Program**

Open Multi-Channel
Support Model

CAMP

Advance CAMP



*The power behind InCommon Software,
Services, and Communities*

Collaboration Success Program



- Established in 2018
- Reaction to community need
- Recognition that folks were fighting individual battles at their institutions and craved something more systematic
- Desire to serve *all* of the community
 - Regardless of IAM maturity level
 - Support to meet institutional goals
- Offer a variety of collaboration and learning opportunities



Current Participants

Program Alumni



Collaboration Success Program 2020 - 2021

Phase 1: Discovery

Phase 2: Prototype and Plan

	SEPT	OCT	NOV	DEC	JAN	FEB	MAR	APR	MAY	JUN	
IAM Self Assessment		Orange bar									
Virtual Workshop		Blue bar			Green bar						
Slack Channels		Purple bar									
BaseCAMP Content		Blue bar									
Training Workshops		Blue bar					Blue bar				
Work Bench Model					Orange bar						
DevOps Series			Blue bar								
Open Office Hours with InCommon Faculty					Green bar						
Priority access to Developers and Experts		Green bar									
Alumni and Campus Connections		Purple bar									

Learn about the InCommon Trusted Access Platform from the Experts

The CSP is designed to be modular so that you can pick and choose the right tools to support your training and planning efforts, ensuring that you'll hit the ground running when it's time to start implementing. Jump in where it's right for you.



Learn



Collaborate



Expert Access



Tools

InCommon Learning and Collaboration

What's this all about?
Will it work for me?

How can I
learn the
details?

How can I get
started?

How can I
get support?

What are
others doing?

How can I
influence the
work?

Learn the basics
of Federation and
related software.

Get one-on-one
expert answers to
your questions.

Learn about each
of the InCommon
Trusted Access
Platform
components
(Shibboleth,
Grouper,
COmanage,
midPoint).

Refine your plan
with help from
experts and peers.

Get help to get it
done.

Finish with
education credit.

Ask community
experts questions
through traditional
methods.

Join a working group.

Meet the Catalysts.

Find out how you
can build on your
work by sharing and
comparing notes
with others.

Work with your
peers to guide
direction of the
services and
software.

BaseCAMP

Software
Training

Collaboration
Success Program

Open Multi-Channel
Support Model

CAMP

Advance CAMP



*The power behind InCommon Software,
Services, and Communities*

Community Governance

Program Advisory Group (PAG)

Provides community input and guidance to T&I programs and services.

Representatives from InCommon Steering, I2 TIER Community Investor Council, and CACTI.

InCommon Steering Committee

- Governs InCommon LLC affairs
- Promotes InCommon mission
- Establishes policies
- Delegates authorities
- Advises Operations Unit

Sustaining Advisory Committees

Community Architecture Committee for Trust and Identity (CACTI)

Standing architecture strategy group of community members. Provides strategic architectural input, manage and evolve community standards.

eduroam-US Advisory Committee (eAC)

Advisory body to CACTI & Internet2 to formulate strategies and practices for US & global research and education roaming networks.

Technical Advisory Committee (TAC)

Community advisory to InCommon's operational processes and practices, strategies, capabilities, and roadmap

Community Trust and Assurance Board

CTAB shepherds community consensus on trust and assurance related issues.

Current Community Working Groups

Trusted Access Platform Software Integration WG

Banner Integration WG - Matthew Brookover

Component Architects WG

BTAA and TIER Collaboration on Provisioning and De-Provisioning WG - Keith Wessel

Groupier WG - Chris Hyzer

IdP as a Service (IdPaaS) WG - Mary McKee, E.J. Monti

Trust & Identity Division and InCommon

International Activities

**Research and Education
FEDerations (REFEDS)**

eduGAIN Steering Group

Federation 2.0 WG

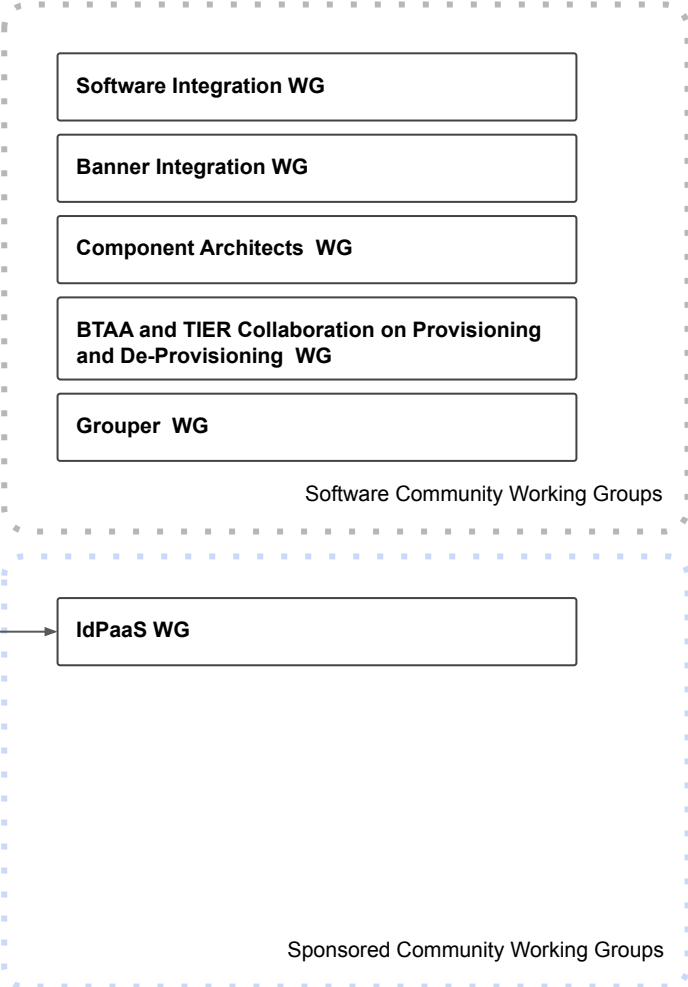
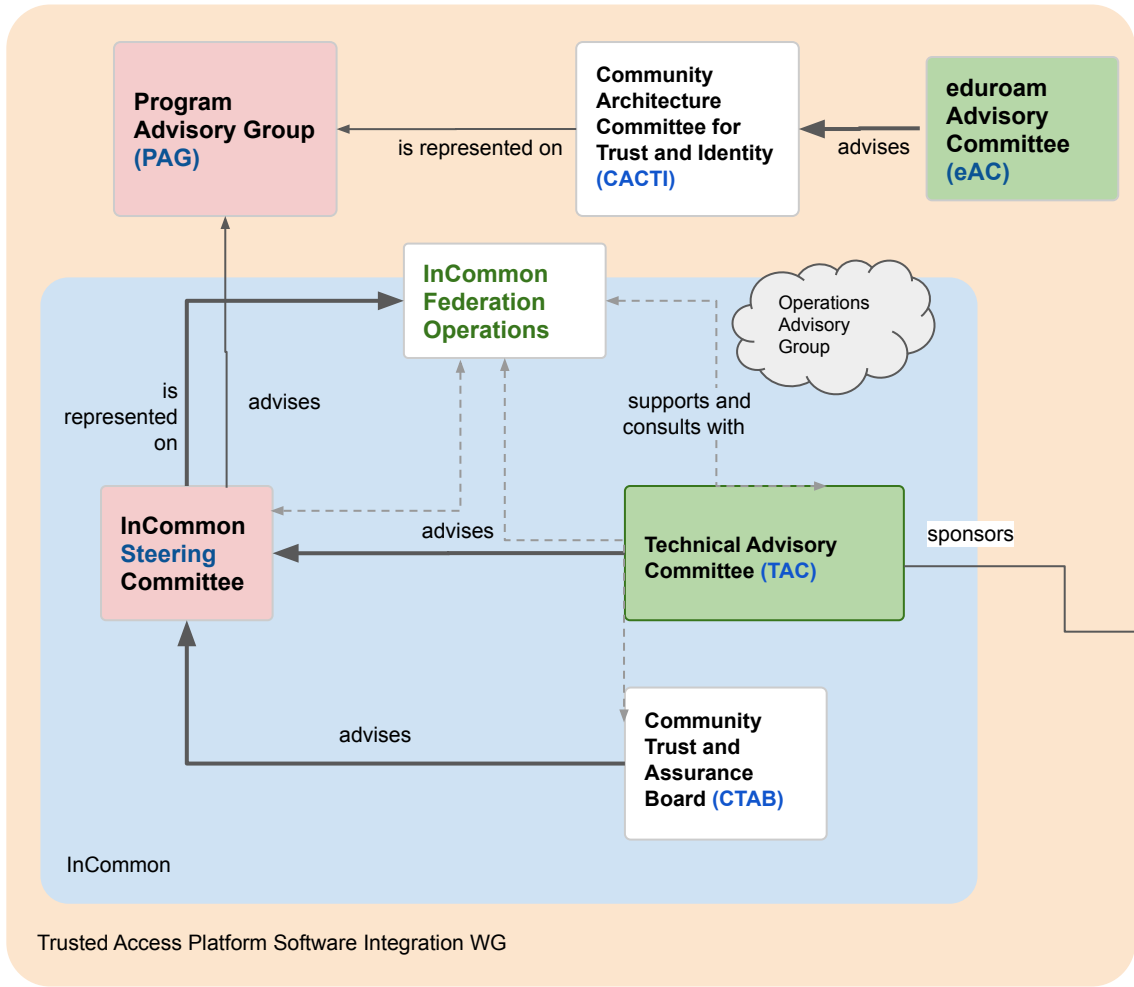
SIRTFI

OIDCre WG

IoLR WG

Entity Category Dev WG

Assurance WG



What are InCommon Catalysts?

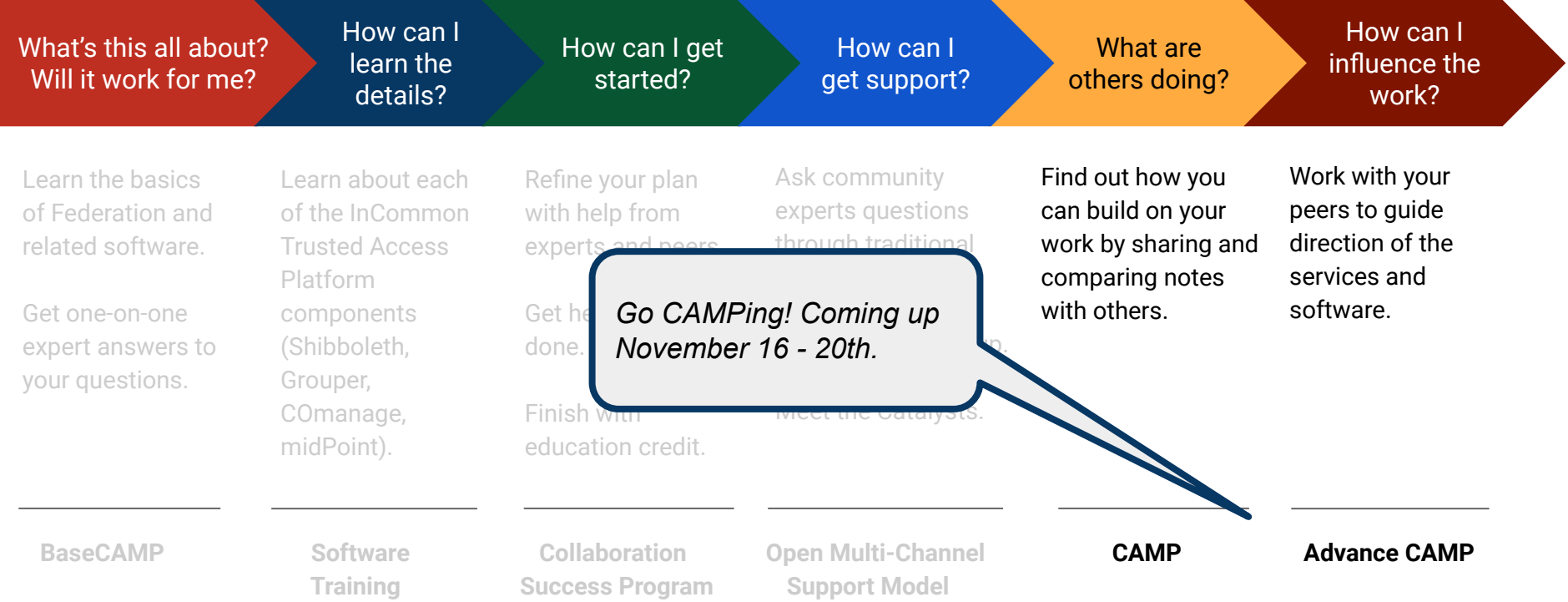
InCommon Catalysts are companies that offer support, training, development, or implementation services to the InCommon community. Catalysts are community members who have actively participated for at least a year, and so they can be trusted to be aware of and work within the community guidelines.

Catalysts agree to continue to work with the InCommon community to plan, design, develop, document, and/or support the InCommon Federation, eduroam, and/or the InCommon Trusted Access Platform.

Who are Catalysts? Current Candidates are:



InCommon Learning and Collaboration

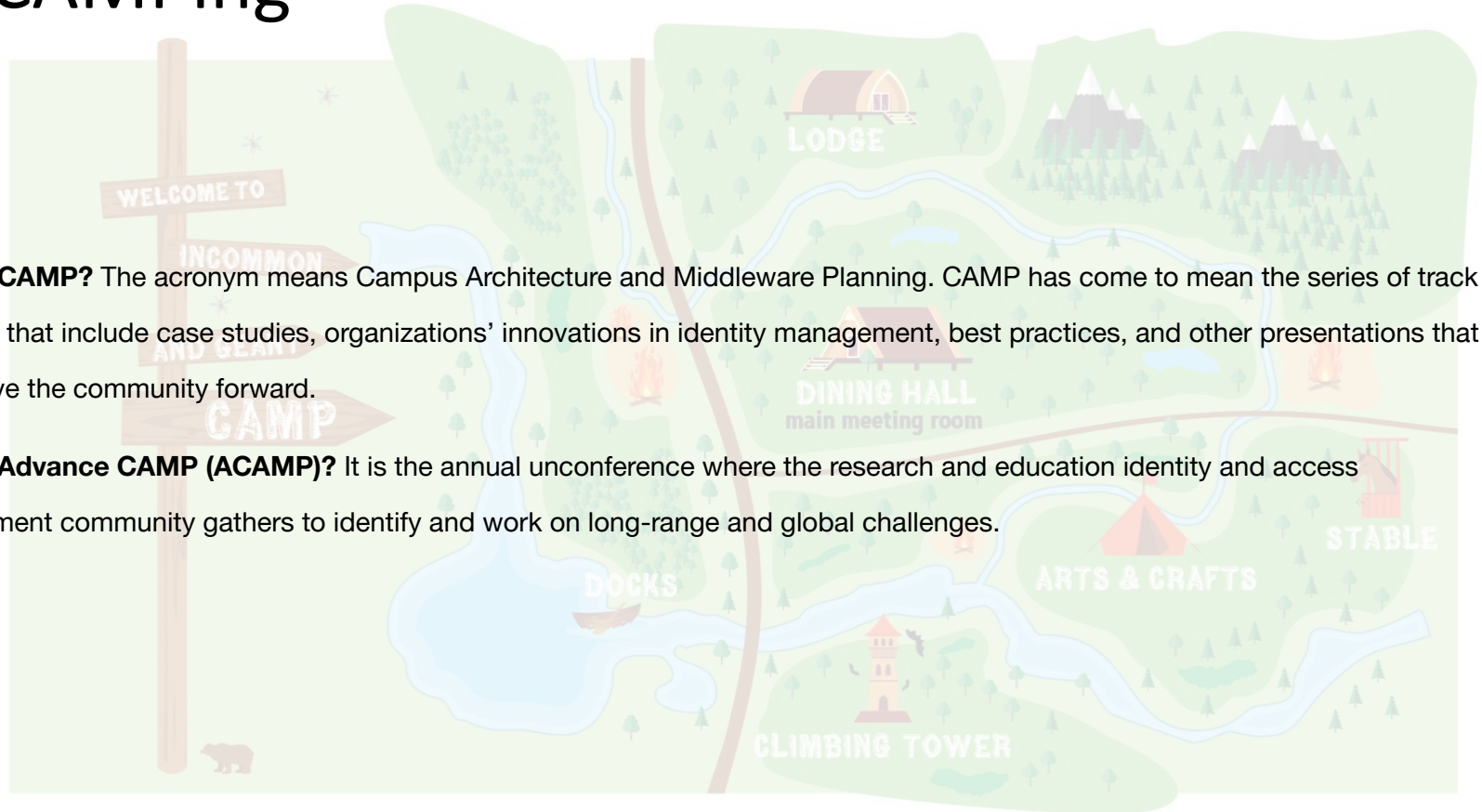


Go CAMPing! Coming up November 16 - 20th.

Go CAMPing

What is CAMP? The acronym means Campus Architecture and Middleware Planning. CAMP has come to mean the series of track sessions that include case studies, organizations' innovations in identity management, best practices, and other presentations that help move the community forward.

What is Advance CAMP (ACAMP)? It is the annual unconference where the research and education identity and access management community gathers to identify and work on long-range and global challenges.



Resources

Federation: InCommon [website](#), [Trust Model Overview](#) and [documentation](#)

Software: [InCommon Trusted Access Platform](#)

Training: [InCommon Academy](#)

Hosting: [CI Logon](#) for Research Identity (leverages InCommon software)

Support and Integration:
Catalyst Partners Program (coming soon)

Price to Join: [InCommon Fees](#)

Global Trust Standards: [REFEDS](#) , [REFEDS Assurance Framework](#)

Area Report: [InCommon Accomplishments Report 2019](#)

Privacy: [GDPR and the Research and Scholarship Entity Category](#)
[GDPR and Federations Assessment](#)